

HXM Series



Configuration model HXM-400

The HXM plate mounted axial flow fans are manufactured from pressed galvanised steel and protected from **corrosion by a beige epoxy-polyester paint finish.**

All models include a steel finger proof guard as standard mounted to the inlet side of the fan. Impellers are manufactured from galvanised steel sheet and finished with black polyester paint.

Motor

Single phase speed controllable motor 230V-50Hz for usage in environments up to +40°C, equipped with thermal protection HXM-200 to HXM-350.

Shaded pole asynchronous induction motor. IP40, Class B insulation, with **sleeve bearings.** Flexible **cable for connection** to the electrical supplies.

HXM-400: External rotor motor, IP44, Class F insulation, with ball bearings greased for life. Provided with a wiring terminal box.

Additional Information

Standard air direction: form (A) configuration (Motor over Impeller).



Provided with cable for connection to the electrical supplies

HXM-400 model terminal box



Motor protected from corrosion by epoxy-polyester paint finish. Cable to ease connection to electrical supplies (except for HXM-400 model)



Wiring terminal box including the capacitor

A P P L I C A T I O N S

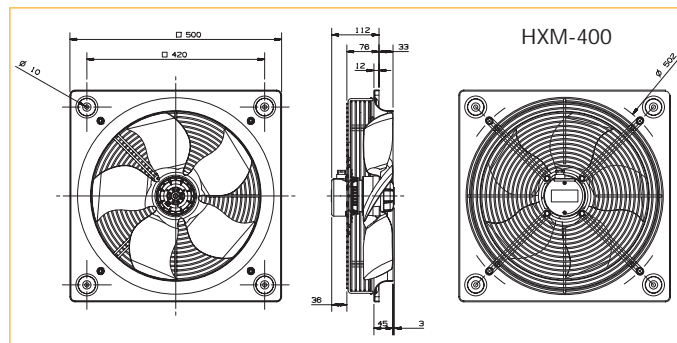
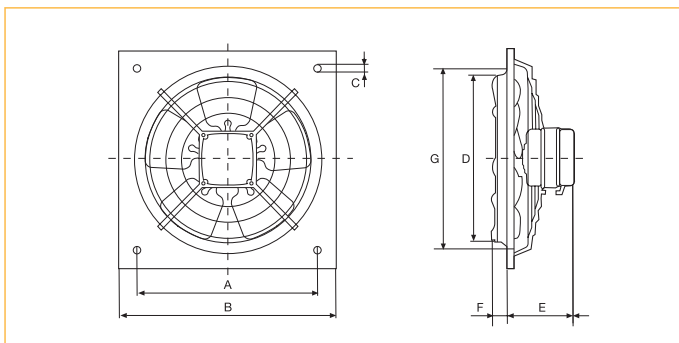


■ Technical characteristics

Before making any electrical connection ensure that the voltage and frequency of the mains electrical supply matches that of the fan data plate label.

Model	Speed (r.p.m.)	Maximum power absorbed (W)	Maximum current absorbed (A)	Maximum air volume (m ³ /h)	Sound pressure level (dB(A))	Weight (kg)
HXM-200	1300	30	0,22	500	36	1,7
HXM-250	1300	40	0,30	900	42	2,5
HXM-300	1300	60	0,45	1400	48	3,1
HXM-350	1300	60	0,45	1800	53	4,4
HXM-400	1065	170	0,70	3400	57	7,3

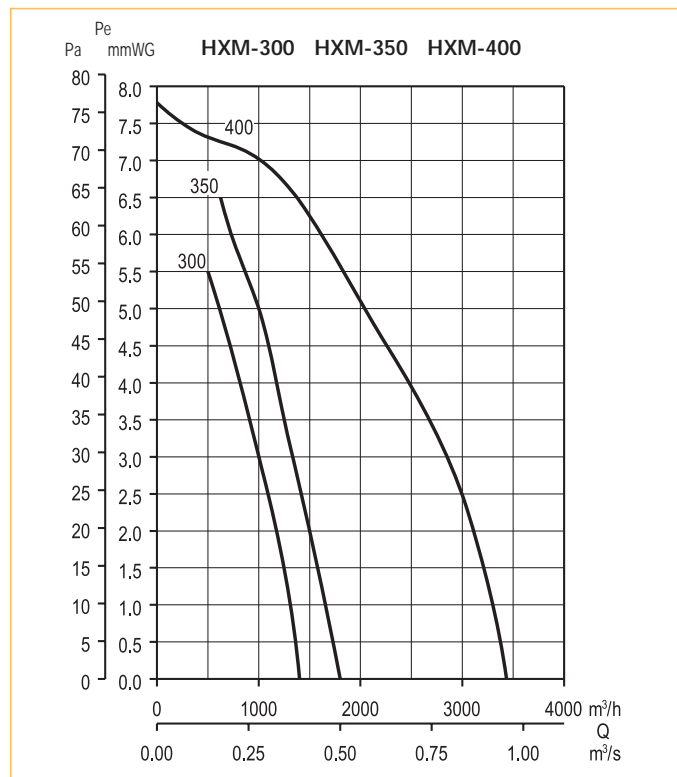
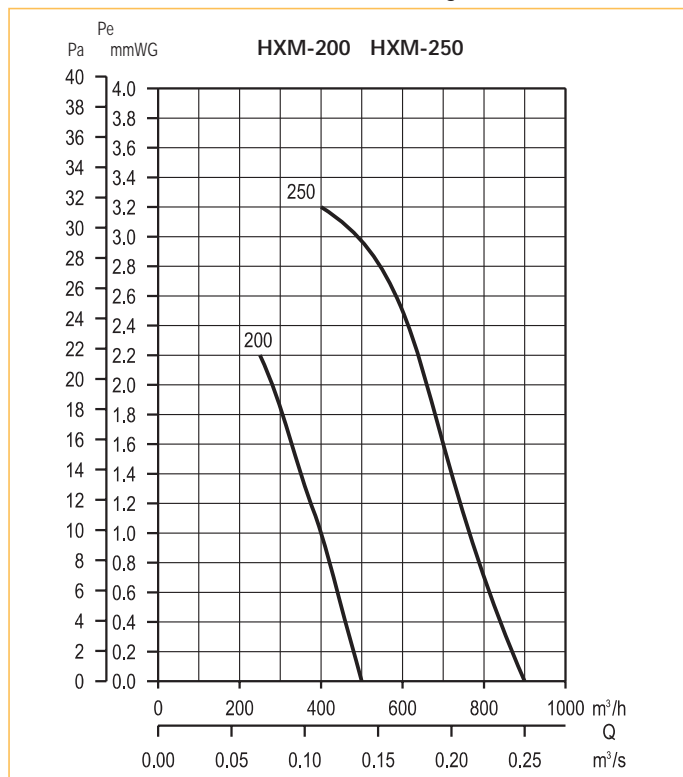
■ Dimensions (mm)



Model	∅ A	∅ B	∅ C	∅ D	E	F	∅ G
HXM-200	222	266	9	205	85,5	19	211
HXM-250	275,5	333	9	255	92,5	31	261
HXM-300	336,5	400	10,5	305	92,5	35,5	311
HXM-350	390	465	10,5	361	105,5	34,5	371

■ Performance curves

- Q = Air volume in, m³/hr and m³/s.
- Pe = Static pressure in mmWG and Pa.
- Dry air at 20°C and 760 mmHg.
- Air flow data in accordance with the following standards: UNE 100-212-89, BS 848, Part 1; AMCA 210-85 and ASHRAE 51-1985.



■ Mounting accessories



Model	Back draft Shutters	
	Plastic	Metal
HXM-200	PER - 200 W	PER - 250 CN
HXM-250	PER - 250 W	PER - 250 CN
HXM-300	PER - 355 W	PER - 355 CN
HXM-350	PER - 355 W	PER - 355 CN
HXM-400	PER - 400 W	PER - 400 CN

■ Electrical accessories



REB
Electronic,
single phase
speed
controller



RMB
Auto transformer,
single phase
speed controller